



# Speciality Machines

Bridge, dual column and horizontal boring machines

## MAX 5

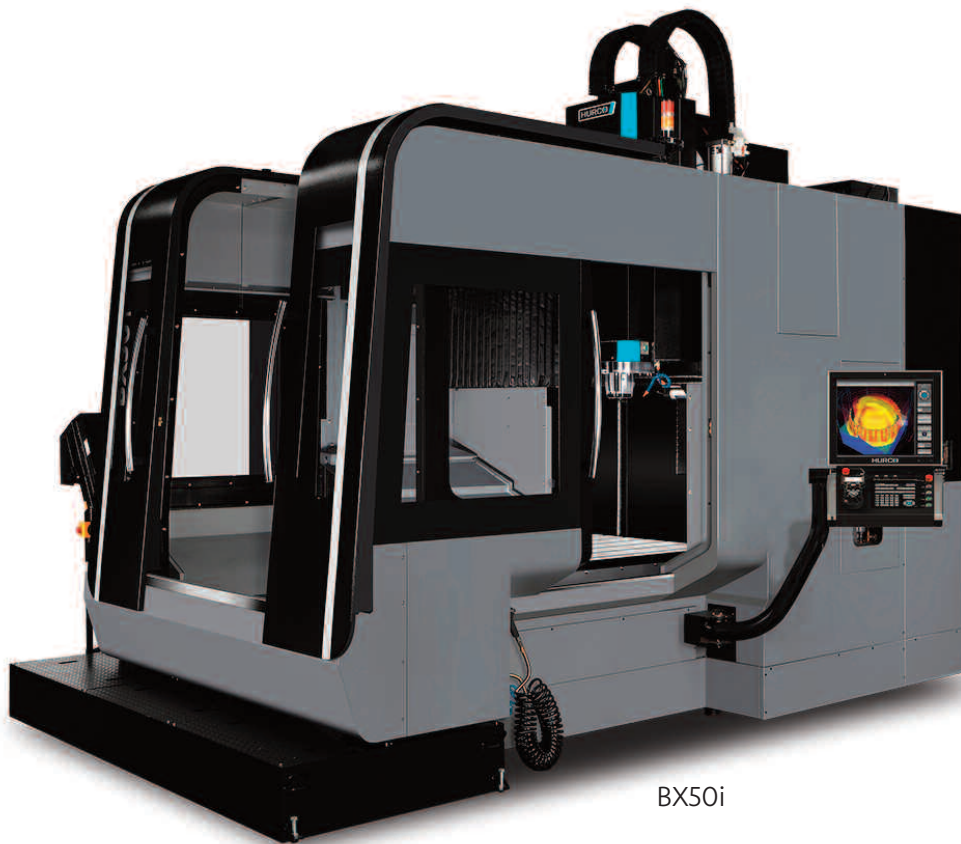
From print to  
part to profit



# BXi

Bridge design for higher  
dynamics and accuracy

- > BX40i
- > BX50i
- > BX60i

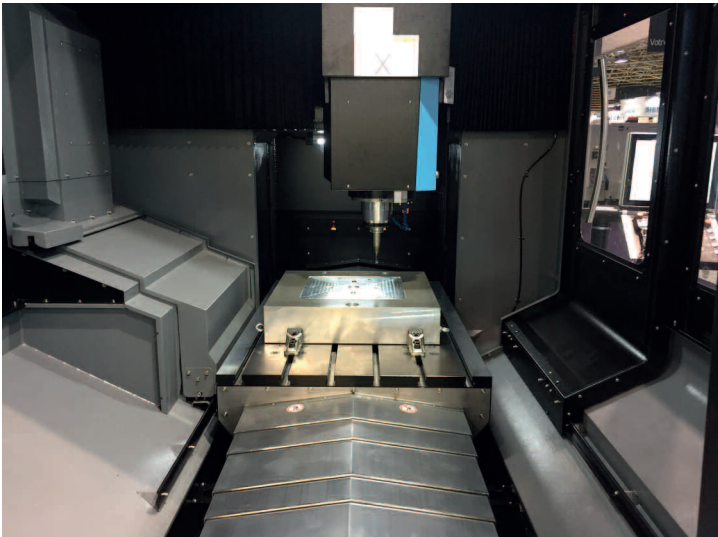


BX50i



## Benefits of the BXi Series

**BXi Series** – The bridge design makes it possible to achieve a large Y axis travel, whilst improving accuracy and thermal stability. Linear scales and direct drives are built-in as standard to ensure outstanding dynamics, accuracy and surface finish for machined components. 20 bar coolant through the spindle is also a standard feature.



	BX40i	BX50i	BX60i
<b>Table</b>			
Table working surface (mm)	1,050 x 700	1,500 x 960	1,900 x 1,300
T-Slots (mm)	6 x 18 x 125	6 x 22 x 160	8 x 22 x 160
Max.load Kg	1,000	2,500	6,000
<b>Travels</b>			
X-Axis (mm)	1,020	1,350	1,600
Y-Axis (mm)	700	950	1,300
Z-Axis (mm)	500	600	700
<b>Spindle Motor</b>			
Spindle Power Max. (kW)	35	35	35
Torque (Nm) Max. @ (rpm)	119 @ 2,800	119@2,800	119@2,800
<b>Spindle</b>			
Taper	HSK63A	HSK63A	HSK63A
Spindle Nose to Table (mm)	678	780	880
Spindle Speed Max. (rpm)	18,000	18,000	18,000
<b>Toolchanger</b>			
Stations	30/50*	30/50*	30/50*
Max. Tool Diameter (mm)	75	75	75
Max. Tool Length (mm)	300	300	300
Max. Tool Weight (Kg)	7	7	7
<b>Further Details</b>			
Rapid travel (m/min.) X/Y/Z-Axis	39/39/39	39/39/39	39/39/39
Machine Weight (Kg)	9,100	13,000	20,000

\* option

Further information and technical data on the product, see [www.hurco.co.uk](http://www.hurco.co.uk).  
Machines shown with options. Prices and information may change without notice.

# VC/VT/BXUi

A range of 5 axis  
configurations to suit  
a variety of applications

- > VCi
- > VCXi
- > VTXi
- > BXUi





## 5 axis options to suit your needs

**VC500i** – Entry level 5 axis machine, but large table capacity. Ideal for one offs, or complex components.

**VCX600i** – High capacity and dynamics, capable of a greater variety of work combined with faster cycle times.

**BX40Ui** – Faster dynamics and higher accuracy due to the bridge design are applied to a 5 axis configuration. Improved performance is achieved through greater machine rigidity.

**VTXUi** – A 5 axis configuration more suited to higher volume, or production work. Option for 96 tools.



	VC500i	VCX600i	VTXUi	BX40Ui
<b>Table</b>				
Working Surface (mm)	Ø500	Ø600 x 600	Ø610 x 530	Ø348
T-Slots (mm)	14 x 100	14 x 100	5 x 18	6 x 14
Max. Table Load (Kg)	250	350	400	250
<b>Travels</b>				
X-Axis (mm)	520	750	800	950
Y-Axis (mm)	450	550	700	550
Z-Axis (mm)	400	500	510	500
A-Axis (°)	-	-	+30/-110	-
B-Axis (°)	+110/-110	+110/-110		-30°/+110
C-Axis (°)	Continuous	Continuous	Continuous	Continuous
<b>Spindle Motor</b>				
Spindle Power (KW) Peak	11	21.4	18.0	35
Torque Peak (Nm) @ (rpm)	73.8@1,450	108.7@1,600	237@720	119@2800
<b>Spindle</b>				
Taper	CAT/BT 40	CAT/BT 40	CAT/BT 40	HSK63A
Spindle Nose to Table (mm) Max	550	700	610	590
Spindle Speed Max (RPM)	10/12,000	12,000	12,000	18,000
<b>Toolchanger</b>				
Stations	30	30	48	30/50*
Max. Tool Diameter (mm)	80	80	75	75
Max. Tool Length (mm)	250	250	280	300
Max. Tool Weight (Kg)	7	7	7	7
<b>Further Details</b>				
Rapid Traverse (m/min) X/Y/Z Axis	24/24/24	30/30/30	35/35/35	39/39/39
Rapid Traverse (rpm) A/C Axis	25/25	25/25	17/17	25/25
Machine Weight (Kg)	8,400	10,000	12,500	9400

Further information and technical data on the product, see [www.hurco.co.uk](http://www.hurco.co.uk).  
Machines shown with options. Prices and information may change without notice.

# DCXi

Double column  
machining centres

- > DCX22i
- > DCX22-50Ti
- > DCX32i
- > DCX32-26i
- > DCX42i
- > DCX32-5Si
- > DCX32-5SCi



## Double column for the BIG stuff

The Hurco Max 5 control is well suited to large component manufacture. The parts are often relatively simple 2D operations. The ease of WinMax programming ensures that everything can be done quickly and simply at the control, in much less time than can be achieved off-line. Furthermore, editing and tuning of the programme is done instantly without having to rely on CAD/CAM programmers.

There is an increasing demand for larger Hurco machines. Our design engineers strongly believe that as soon as a Y travel of more than 1 metre is required, the traditional C-frame design machining centre loses too much stability to maintain the required accuracy.

The dual column design allows a very stiff and thermally stable structure. Additionally, the high capacity worktable can cater for very heavy components and easy loading by fork-lift or crane.

Since its introduction, the DCXi Series has quickly become the first choice of automotive press-tool manufacturers and also is widely used in aerospace, power generation and large component manufacture.

	DCX22i	DCX22-50Ti	DCX32i	DCX32-26i	DCX42i	DCX32-5Si	DCX32-5SiCi
<b>Table</b>							
Table working surface (mm)	2,100 x 1,600	2,100 x 1,600	3,000 x 1,700	3,000 x 2,100	4,000 x 2,100	3,000 x 1700	3,000 x 1700
T-Slots (mm)	9 x 22 x 180	9 x 22 x 180	7 x 22 x 220	9 x 22 x 220	9 x 22 x 220	7 x 22 x 220	7 x 22 x 220
Max.load Kg	6,000	8,000	11,000	14,000	16,000	11,000	11,000
<b>Travels</b>							
X-Axis (mm)	2,200	2,200	3,200	3,200	4,200	3,200	3,200
Y-Axis (mm)	1,700	1,700	2,100	2,600	2,600	2,000	2,000
Z-Axis (mm)	750	750	920	920	1,100	900	900
B-Axis						+/-105°	+/-105°
C-Axis						+/-185°	Continuous
<b>Spindle Motor</b>							
Spindle Power Max. (KW)	18	26	60	60	60	54	54
Torque (Nm) Max. @ (rpm)	237@720	555@458	570@1,000	570@1,000	570@1,000	85@3,000	85@3,000
<b>Spindle</b>							
Taper CAT or BT	40	50	50	50	50	HSK63A	HSK63A
Spindle Nose to Table (mm) Max.	900	900	1084	1084	1260	966	966
Spindle Speed Max. (rpm)	12,000/15,000*	6,000/8,000*	6,000/10,000*	6,000/10,000*	6,000/10,000*	18,000	18,000
<b>Toolchanger</b>							
Stations	40	40	40	40	40	40	40
Max. Tool Diameter (mm)	75	125	125	125	125	76	76
Max. Tool Length (mm)	300	300	300	300	300	300	300
Max. Tool Weight (Kg)	7	15	15	15	15	7	7
<b>Further Details</b>							
Rapid travel (m/min.) X/Y/Z-Axis	24/24/24	15/15/12	15/15/10	15/15/10	12/12/10	15/15/10	15/15/10
Max RPM B/C axis						11.25/7.5	11.25/7.5
Machine Weight (Kg)	20,000	20,500	35,000	40,000	50,900	36,770	36,770

\*option

Further information and technical data on the product, see [www.hurco.co.uk](http://www.hurco.co.uk).  
Machines shown with options. Prices and information may change without notice.

# HBMXi

Horizontal boring mills

- > HBMX55i
- > HBMX80i
- > HBMX95-5i
- > HBMX120i





## Horizontal boring mill

The Hurco Horizontal Boring Mill has a small footprint, considering the large work envelope. It is generally heavier than equivalent boring mills in its class.

The boring mills incorporate a geared spindle head with two speeds for low and high torque, plus hardened and ground boxway construction. We've packaged our boring mills to include the features you need for typical applications, so that they don't need to be added as options at extra cost.

A large diameter quill, full contouring rotary 4th axis (not just positional) linear glass scales, a 60 station toolchanger (90 optional) and 20 bar coolant through the spindle are all standard features.

Further information and technical data on the product, see [www.hurco.co.uk](http://www.hurco.co.uk).  
Machines shown with options. Prices and information may change without notice.

	HBMX55i	HBMX80i	HBMX95-Si	HBMX120i
<b>Table</b>				
Table working surface (mm)	1.120 x 1.250	1.440 x 1.600	1.800 x 2.000	1.440 x 1.600
Max. load (kg)	4.000	6.300	10.000	6.300
Spindle nose to table min/max (mm)	-45 – 1.555	130 – 2.280	848 – 2.348	130 – 2.280
T-Slots (mm)	7 x 24 x 160	9 x 24 x 160	9 x 28 x 185	9 x 24 x 160
Distance between columns (mm)	–	–	–	–
<b>Travels</b>				
X-Axis (mm)	1.400	2.000	2.400	3.000
Y-Axis (mm)	1.390	1.780	2.100	1.780
Z-Axis (mm)	1.100	1.650	1.500	1.650
B-Axis (°)	360	360	360	360
C-Axis (°)	500	500	900	500
<b>Spindle</b>				
Max. spindle speed (rpm) / taper	454 / 2.500 / SK-50	454 / 2.500 / Sk-50	350 / 1.500 / Sk-50	454 / 2.500 / Sk-50
Spindle power (peak) (kw @ rpm)	30 @ 695,5	30 @ 695,5	30 @ 383	30 @ 695,5
Spindle torque (peak) (Nm)	1.500	1.500	2.500	1.500
Spindle quill diameter (mm)	110	110	135	110
<b>Automatic Toolchanger</b>				
Stations	60	60 (90)	60 (90)	60 (90)
Max. Tool Diameter (mm)	120	120	120	120
Max. Tool Length (mm)	400	400	400	400
Max. Tool Weight (Kg)	25	25	25	25
Tool to tool ATC time (s)	15	15	15	15
<b>Feed rate</b>				
Rapid traverse XYZ (m/min)	10 / 10/ 10	10 / 10/ 10	10 / 10/ 10	10 / 10/ 10
Progr. feed rate (m/min)	7,6 / 4	7,6 / 4	7,6 / 4	7,6 / 4
B-Axis max. RPM	1	1	1	1
C-Axis (mm)	4	4	4	4
<b>Further Details</b>				
Machine Weight (kg)	19,200	23,500	26,000	25,500

\* option

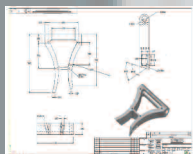
# Max 5

From print to part to profit

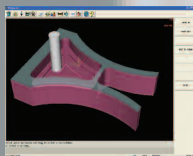
- > faster from drawing to finished part
- > shortest learning curve
- > fastest programming
- > intuitive operation
- > ergonomically designed



Sketch



Drawing



CAD/CAM



Desktop



DXF File



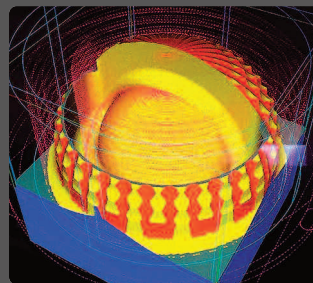
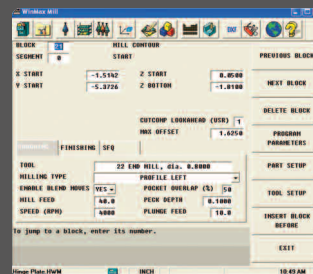
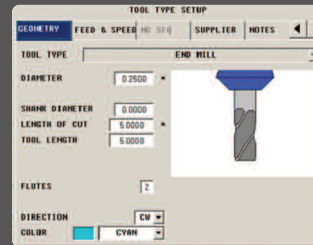
# WinMax®:

## Faster from the drawing to the finished part

HURCO continues its reputation for technology innovation that yields measurable productivity gains for its customers because we're focused on your success. When we designed WinMax® control software, we focused on simplicity for the user. Less keystrokes, intuitive software, advanced graphics capabilities, and an enhanced graphical interface.

Conversational programming with WinMax® gets you from print to part faster than ever. Three steps and you're there.

- > **Setup.**
- > **Program.**
- > **Verify.**
- > Powerful software simplifies 5-sided programming.
- > Reduce programming time by 80 percent with Swept Surface. Additional tool path strategies simplify 3D mold programming\*.
- > Maximize surface finish and minimize time with Select Surface Finish Quality Machining.
- > Eliminate bottlenecks with automated programming of DXF Transfer feature\*.
- > Incorporate NC code into conversational programs with NC/Conversational Merge\*.
- > Save time with Math Assist feature that automatically trigs out missing values.



### Step 1: Setup

Setup is even easier with the WinMax® Tool & Material Library. Set up each tool one time and you're finished—the parameters are stored with the control so you just recall the tool the next time.

### Step 2: Program

The graphical user interface of WinMax simplifies programming. Conversational programming with WinMax® will save you time and give you peace of mind — especially when you need to hire and train employees because it's easy to learn and easy to use.

### Step 3: Verify

Advanced Verification Graphics with 3D solid rendering of the part, including dynamic rotation and real time tool display, make proving out the part a snap. View the part from any angle without the need to redraw it.

- > Tool and Material Library\*  
9,999 programmable tools
- > Tool change optimization with Conversational Programs\*
- > Conversational NC-Merge\*
- > HURCO Ultimotion, high speed contouring

\* optional

**United Kingdom and Ireland**

Halifax Road  
Cressex Business Park  
High Wycombe HP12 3SN  
Tel: (01494) 442222  
sales@hurco.co.uk  
www.hurco.co.uk

**South Africa**

Hurco South Africa  
Unit 9, 30 Golden Drive  
Benoni, Gauteng  
South Africa  
Tel: +27 11 849 5600/1  
sales@hurco.co.za  
www.hurco.co.za

**Sweden**

AB Nordiska Wemag  
Gottskarsvagen 150  
SE-43994 Onsala  
Sweden  
Tel: +46 300 302 90  
info@nordiskawemag.se  
www.nordiskawemag.se

**Israel**

NR Automation  
Shenhav 9  
Neve Monoson  
60190 Israel  
Tel: 03-6342115  
www.n-r.co.il  
info@n-r.co.il

**Setra Egypt**

Professional Industrial Solutions  
Ordonia Buildings, Building 16, Office 1  
Post No. 44466, Egypt  
Tel: +20 1001 82 1622  
Email: Yasser@setraegypt.com  
www.setraegypt.com

**Greece**

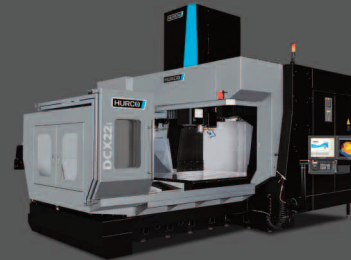
Ropi Machine Tools  
64B Vasilikon Str.  
18 540 PIRAEUS, Greece  
Tel: +30 210 413 1712  
Fax: 0030 210 4131714  
info@ropi-machines.gr  
www.ropi-machines.gr

**Finland**

Prokone Oy  
Sahamaenkuja 4  
01860 PERTTULA  
Finland  
Tel: +358 400 793734  
info@prokone.com  
www.prokone.com

**Denmark**

CNC-TECH Aps  
Rydskovvej 41  
Rydskov  
DK-5560 Aarup  
Tel: +45 6488 1060  
info@cnc-tech.dk  
www.cnc-tech.dk

**MACHINING CENTRES****TURNING CENTRES****5 AXIS****DOUBLE COLUMN****SUPERIOR CONTROLS**